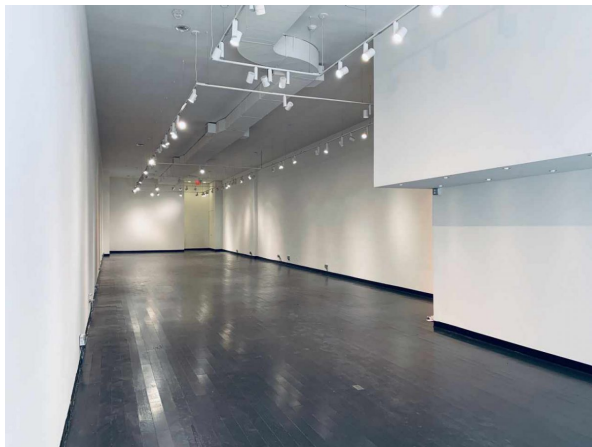
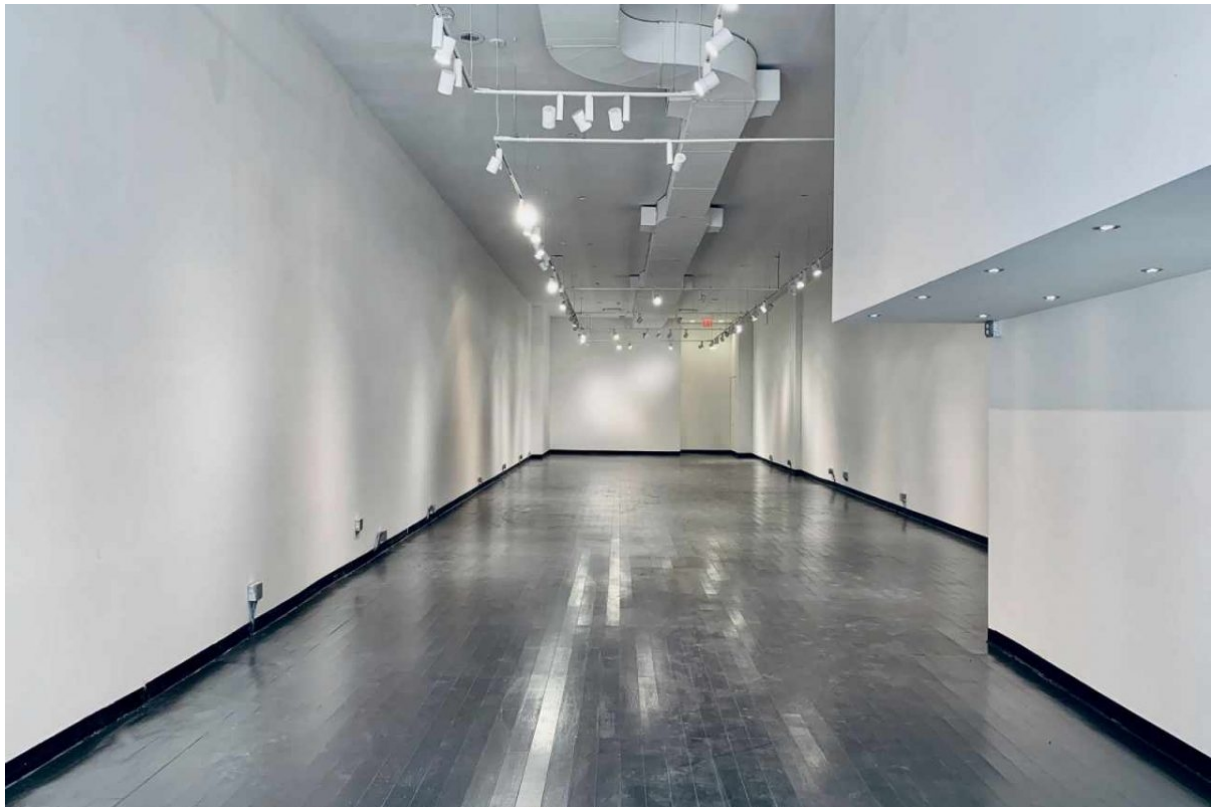


RAWSPACE

Prime Soho Retail



Total size: 6000

- ✓ AC/Heat
- ✓ Office
- ✓ Elevator
- ✓ Restrooms
- ✓ Finished basement
- ✓ Rooftop
- ✓ Fitting rooms
- ✓ Second egress
- ✓ Glass frontage
- ✓ Skylight
- ✓ Handicap access
- ✓ Stairs
- ✓ Kitchen
- ✓ Storage
- ✓ Lighting
- ✓ Street entrance
- ✓ Loading dock
- ✓ Tall Ceilings
- ✓ Natural light
- ✓ Wifi
- ✓ Nearby parking
- ✓ Windows

Located on the famed Broadway Corridor, this epic pop-up location is primely positioned between Houston and Prince. The attractive Federal style facade offers a 25 ft glass frontage as well as a flagpole. Within the premium venue lies 6,000 sq ft of column-free space, tall ceilings, gallery walls, hardwood floors, and suspended track lighting. Unlike traditional Soho spaces where the storage opportunity is in the basement, this property offers a large storage area on the main floor behind the retaining wall. Large enough to be used as a separate activation space or for convenient storage, this area also contains two modern ADA-compliant restrooms plus a concealed sanit sink. A robust 15-ton HVAC system rounds out the venue's first-class features.

Floor plan

