

# RAWSPACE

## Homestead in Soho

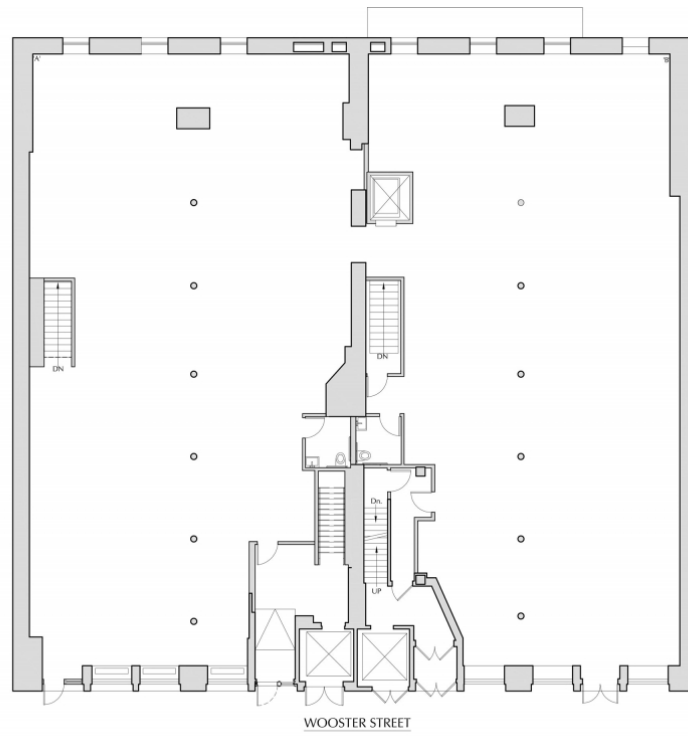


**Total size: 16900**

- ✓ AC/Heat
- ✓ Elevator
- ✓ Finished basement
- ✓ Fitting rooms
- ✓ Glass frontage
- ✓ Handicap access
- ✓ Kitchen
- ✓ Lighting
- ✓ Loading dock
- ✓ Natural light
- ✓ Nearby parking
- Office
- ✓ Restrooms
- Rooftop
- ✓ Second egress
- ✓ Skylight
- ✓ Stairs
- ✓ Storage
- ✓ Street entrance
- ✓ Tall Ceilings
- ✓ Wifi
- ✓ Windows

The Homestead in Soho offers a rare opportunity to showcase your brand in the heart of Soho. Located between Prince and Spring, the Homestead offers a commanding 100 ft frontage and a combined square footage of 16,900 sq ft across two floors. The ground floor storefront is 9,400 sq ft with a 14 ft ceiling and features hardwood flooring, LED fixtures, a large skylight, and two ADA compliant restrooms. The lower level offers 7,500 sq ft and provides an additional space for a separate activation or production needs. The lower level is accessible by an internal staircase as well as a dedicated elevator, and features two additional restrooms. Neighboring retailers include: Balmain, Canada Goose, Celine, Chanel, DVF, Fendi, Jimmy Choo, and Ted Baker to name a few.

## Floor plan ground level

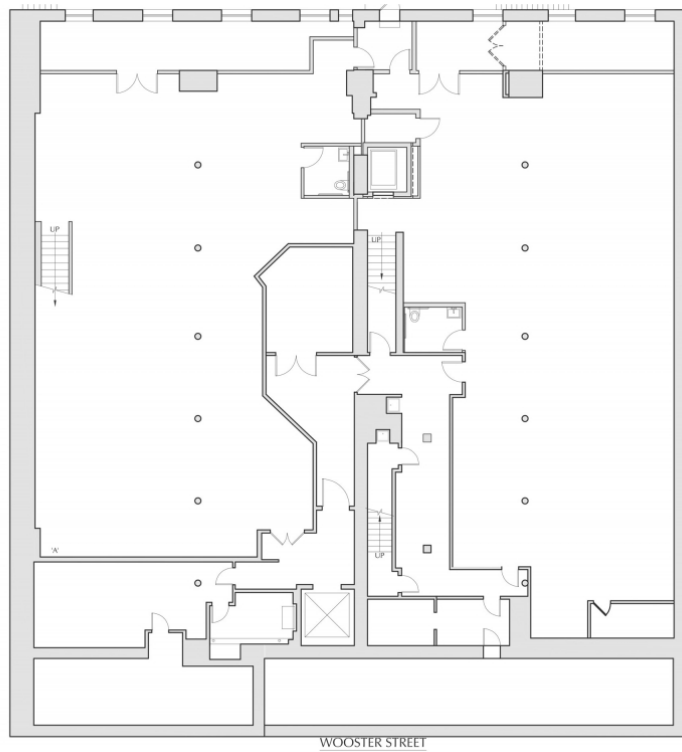


02.10.20

Michael Zenreich Architects, P.C. 149 West 36th Street, New York, N.Y. 10018

105 Wooster Street, 1ST Floor, New York, N.Y.

## Floor plan lower level



02.10.20

Michael Zenreich Architects, P.C. 149 West 36th Street, New York, N.Y. 10018

105 Wooster Street, 1ST Floor, New York, N.Y.