

RAWSPACE

Space Studios

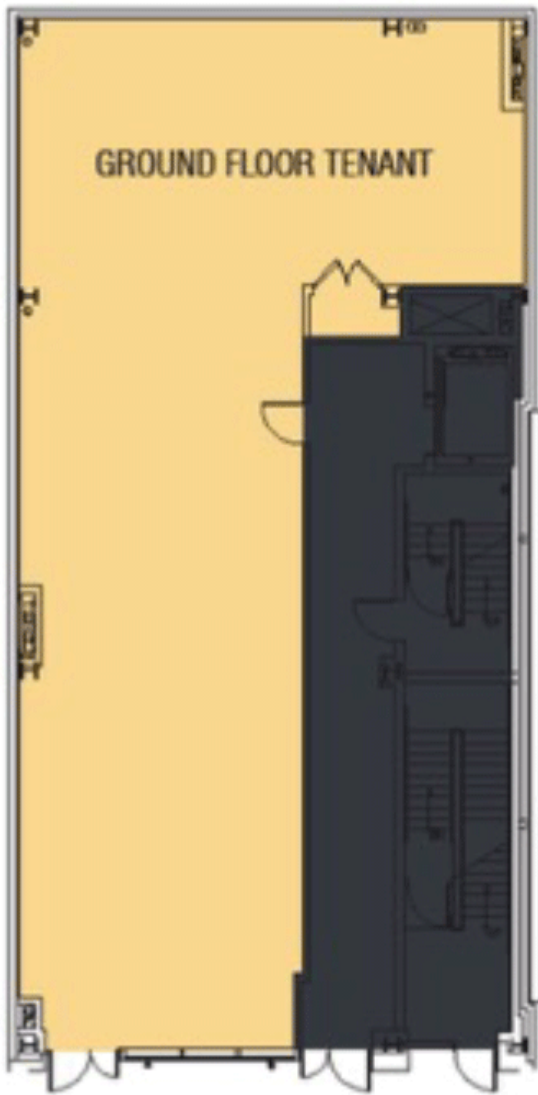


Total size: 4500

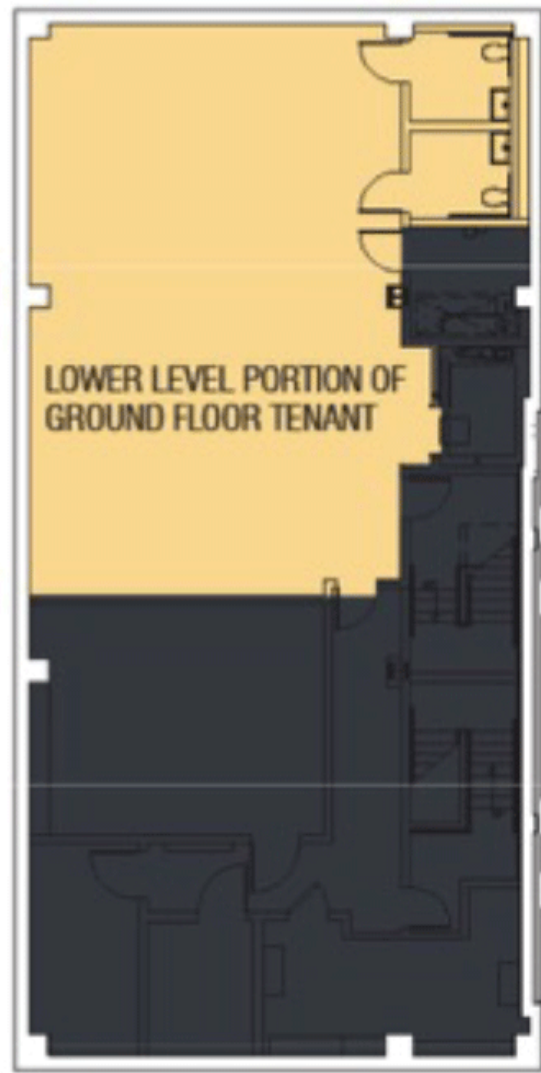
- ✓ AC/Heat
- ✓ Elevator
- ✓ Finished basement
- Fitting rooms
- Glass frontage
- ✓ Handicap access
- Kitchen
- ✓ Lighting
- Loading dock
- Natural light
- Nearby parking
- Office
- ✓ Restrooms
- Rooftop
- ✓ Second egress
- Skylight
- Stairs
- ✓ Storage
- Street entrance
- Tall Ceilings
- ✓ Wifi
- ✓ Windows

This space is a blank canvas with an open floor plan with no columns, 16-foot ceilings, and a 19-foot glass frontage.

Floor plans



FIRST FLOOR PLAN



LOWER LEVEL