

RAWSPACE

Raw Loft in Soho

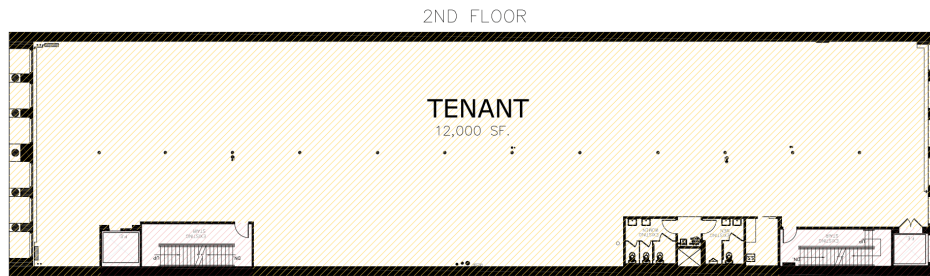


Total size: 12000

- ✓ AC/Heat
- ✓ Elevator
- Finished basement
- Fitting rooms
- Glass frontage
- ✓ Handicap access
- Kitchen
- ✓ Lighting
- Loading dock
- Natural light
- Nearby parking
- Office
- ✓ Restrooms
- Rooftop
- ✓ Second egress
- Skylight
- Stairs
- ✓ Storage
- Street entrance
- Tall Ceilings
- ✓ Wifi
- ✓ Windows

This loft space has an open floor plan, windows, wall space and pre-war charm.

Second Floor



483 BROADWAY

SCALE: 1/16" = 1'-0"